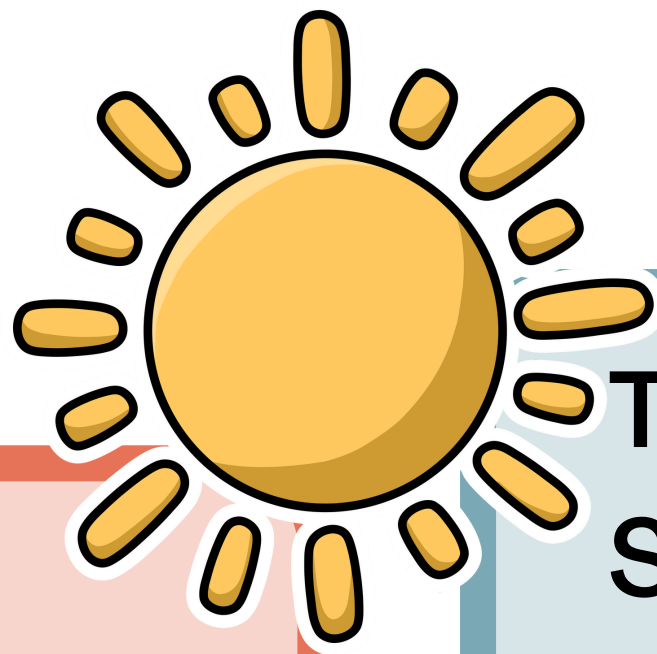


# Light Energy...

**raft**<sup>®</sup>

RESOURCE  
AREA FOR  
TEACHING

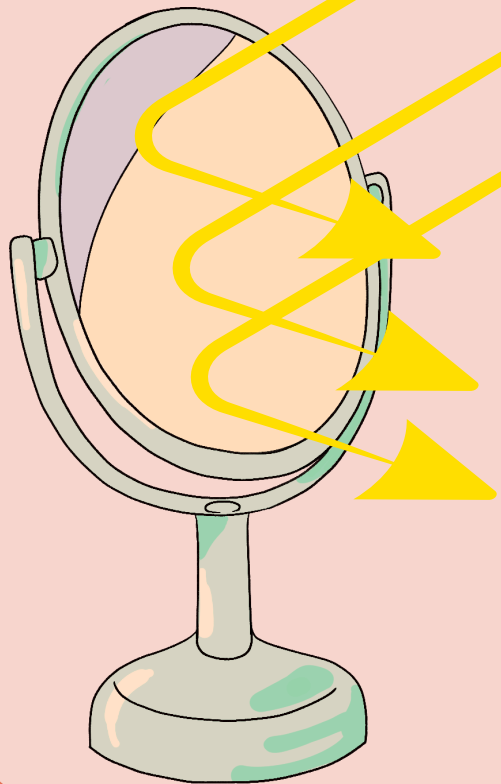


## TRAVELS IN A STRAIGHT LINE

until it hits an object or travels from one medium to another.

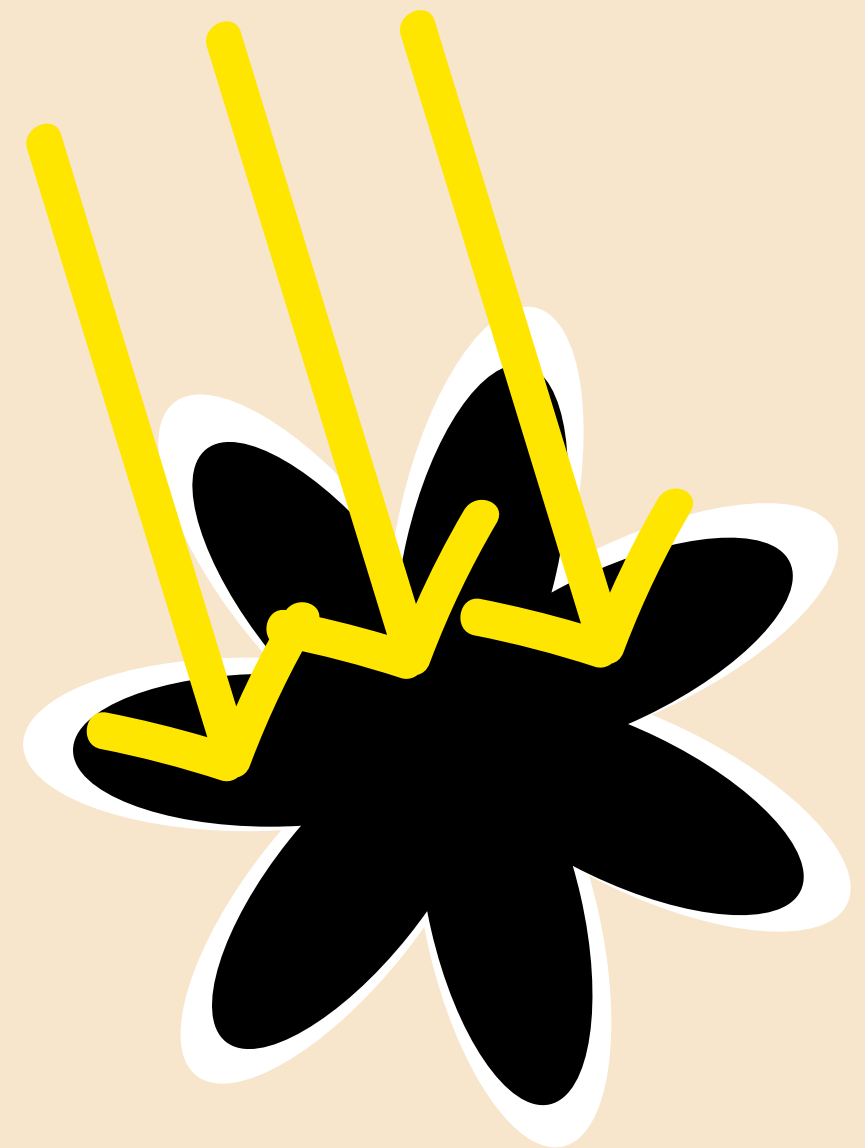
## REFLECTS

When light hits shiny or light colored items, it bounces off the surface and changes direction.



## ABSORBS

Light goes into an object and stops.



## REFRACTS

Light bends when traveling from one medium to another.



## ELECTROMAGNETIC SPECTRUM

