

Solar Jitterbug

Initials/number: _____

Teacher: _____

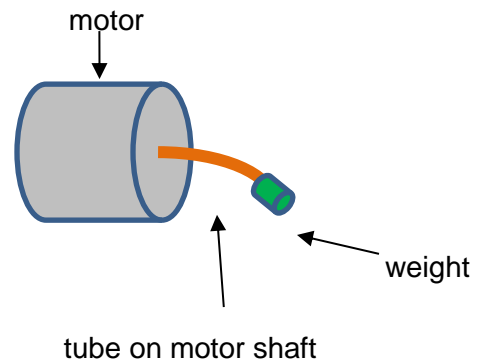
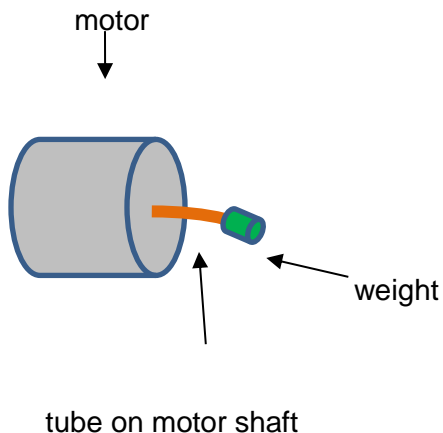
Date: _____

1. What happens when the plus and minus connections of a power source to a motor are switched?

- a) Motor speeds up
- b) Motor slows down
- c) Motor turns in the opposite direction
- d) Nothing changes

2. Below are drawings of two low power motors with weights attached to different length tubes on the motor shafts.

If the small motors have the same low power source – In which drawing is the weight likely to spin more slowly because the motor has to work harder? Circle that motor.



3. Which of the following uses a motor with an offset weight?

- a) Car
- b) Cell Phone
- c) Air conditioner
- d) Heater
- e) Tablet Computer

For what function is the offset weight used? Explain:
