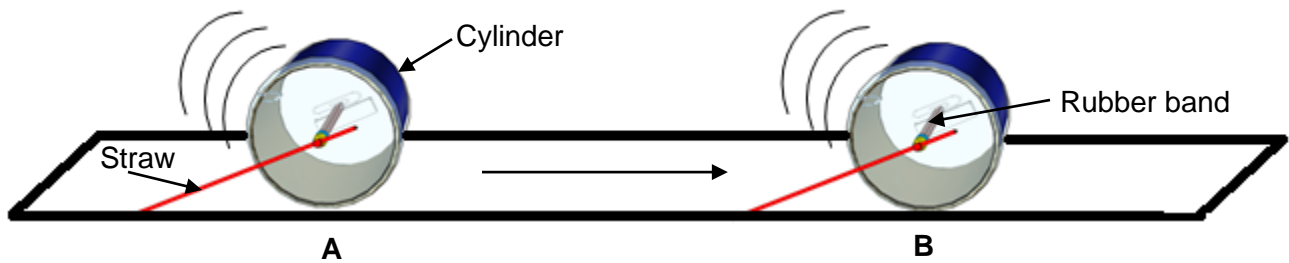


Roller Racer

Name: _____

Teacher: _____

Date: _____



1. As the roller racer (cylinder) rolls from A to B, the type of energy it has while moving is called _____.
 - A. Potential energy
 - B. Kinetic energy
 - C. Electrical energy
2. Rotating the straw will twist the rubber band in the roller racer. When the rubber band has _____ twists, the roller racer should travel _____.
 - A. Fewer, farther
 - B. More, farther
 - C. None of these
3. A rubber band can store energy when it is twisted. The stored energy is called _____.
 - A. Potential energy
 - B. Kinetic energy
 - C. Electrical energy