

Roller Racer

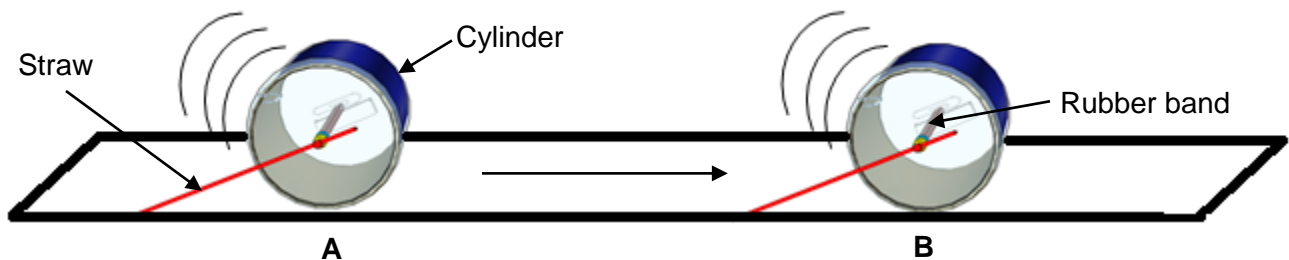
Name: _____

Teacher: _____

Date: _____

Please circle ALL THE WORDS that describe the activity you just did:

Fun	Asking Questions	Boring
Creative	Like	Solving Problems
Dislike	Hard	I'm good at it
Easy	Thinking	Learning



- As the roller racer (cylinder) rolls from A to B, the type of energy it has while moving is called _____.
 - Potential energy
 - Kinetic energy
 - Electrical energy
- Rotating the straw will twist the rubber band in the roller racer. When the rubber band has _____ twists, the roller racer should travel _____.
 - Fewer, farther
 - More, farther
 - None of these

(Turn over)

3. A rubber band can store energy when it is twisted. The stored energy is called _____.
- A. Potential energy
 - B. Kinetic energy
 - C. Electrical energy